

SIEGENIA Innovations for you:

KFV AS 3600 TA

with integrated daytime release

Our benefits³:

- ➊ Reliable, automatic locking and unlocking of front and entrance doors
- ➋ Integrated daytime release for keyless opening
- ➌ Burglar resistance up to RC2 in accordance with DIN EN 1627-1630

Security and more.

The principle of the AS 3600 automatic lock is just as simple as it is effective: As soon as both automatic falling bolts in the auxiliary lock cases are activated by the mechanical trigger, they initiate the closing process and, in doing so, lock out to 20 mm. At the same time, two hook bolts grip into the frame parts. Suitable for installation in elements in accordance with DIN EN 1627–1630 up to resistance class RC2.

Great versatility with accessories

Ease of use and quick access to the outside without the use of a key are achieved by an optional daytime release, integrated into the main deadbolt. In combination with the KfV day latch or an E-opener, this allows you to go back into the building merely by pushing the door due to the temporary deactivation of the automatic function.

The daytime release is activated by holding down the lever handle and by pushing down the sliding lever in the main lock bolt. In addition, the latch of the multi-point lock must be released via the daytime release function e.g. a KfV day latch 115A/B or an E-opener on the frame side.

Moreover, great versatility is offered by the AS 3600 due to a variety of additional features such as, for example, the door arrester, which provides protection against unauthorised access. It can easily be blocked from the inside via the swivel knob. Unlocking from the outside by key is also possible if desired.

Effective,
safe,
convenient.

Benefits for fabricators

- Back pressure secured automatic falling bolt and hook bolt
- Can be used DIN right or DIN left by switching the main lock latch and both automatic falling bolts
- Significant time and cost savings in production
- Daytime release integrated in the main deadbolt (can be retrofitted or preassembled at the factory)
- Can be combined with the KfV day latch or the E-opener in the frame part – to activate the daytime release
- Further equipment possible

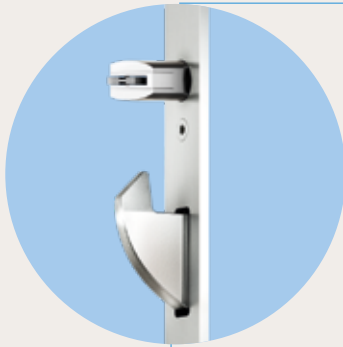
Benefits for end users

- Burglar resistance up to RC2 in accordance with DIN EN 1627-1630
- Insurance coverage as soon as you close the door
- Main lock and automatic falling bolt with maintenance-free soft-lock latch
- Locking elements at the top and bottom protect the door against warping
- Optional, integrated daytime release for keyless opening
- The automatic function can be deactivated via a blocking lever in the main lock bolt
- Large range of features

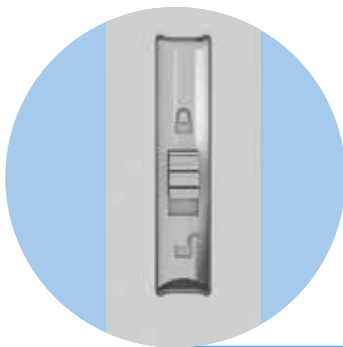
Maximum user friendliness.



Burglar resistance
up to RC2



The AS 3600 automatic lock for timber, metal and PVC doors combines security with convenient operation.



Integrated daytime release
for keyless opening



SIEGENIA®
brings spaces to life

Head Office:
Industriestraße 1-3
57234 Wilnsdorf
GERMANY

Phone: +49 271 3931-0
Telefax: +49 271 3931-333
info@siegenia.com
www.siegenia.com



You can find address details for our
international sites at: www.siegenia.com

SIEGENIA worldwide:

Austria Phone: +43 6225 8301
Belarus Phone: +375 17 2573988
Benelux Phone: +31 613 143773
China Phone: +86 316 5998198
France Phone: +33 3 89618131
Germany Phone: +49 271 39310
Great Britain Phone: +44 2476 622000
Hungary Phone: +36 76 500810

India Phone: +91 124 4342302
Italy Phone: +39 02 9353601
Poland Phone: +48 77 4477700
Russia Phone: +7 495 7211762
South Korea Phone: +82 15445369
Switzerland Phone: +41 33 3461010
Turkey Phone: +90 216 5934151
Ukraine Phone: +38 044 4065793

Contact your dealer: